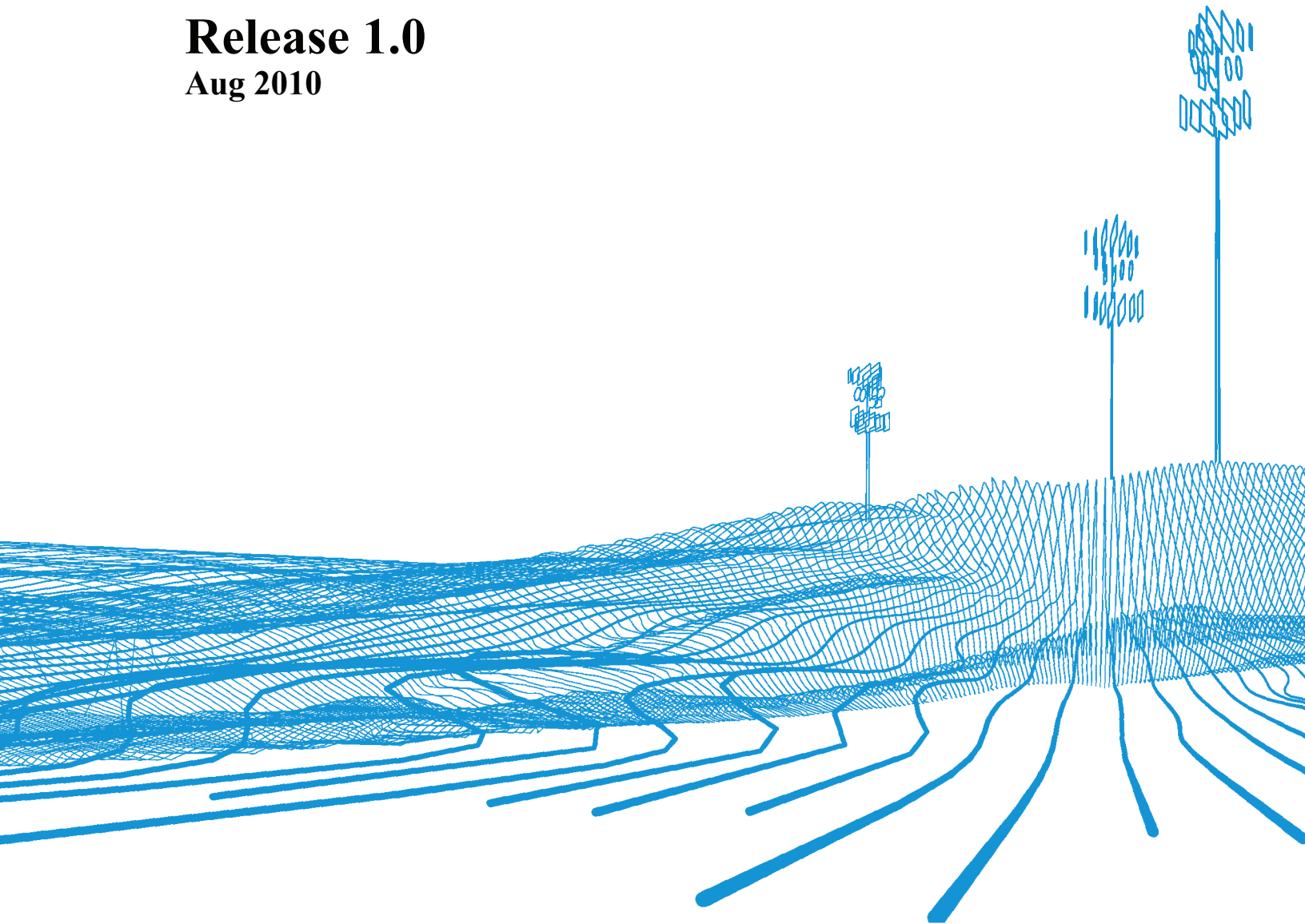




PCTEL MX USB Driver Installation Guide
Release 1.0
Aug 2010



[This Page Intentionally Left Blank]



PCTEL SeeGull MX Driver Installation Procedure Release 0.1

**Document Number: 100059-00
Revision A**

Restrictions: This document contains proprietary information that is protected by copyright; it is intended for use by PCTEL and its customers only. It is not to be disclosed to a third party. All rights reserved. No part of this document may be photocopied or reproduced in any way without the prior written permission of PCTEL, RF Solutions. The information contained in this document is subject to change without notice. PCTEL, RF Solutions makes no warranty of any kind with regard to this document. PCTEL, RF Solutions shall not be liable for errors or omissions contained herein or for incidental or consequential damages in connection with the use of this document.



Trademarks

© 2010 PCTEL, Inc. All rights reserved. PCTEL, InSite®, CLARIFY®, the CLARIFY® logo and the PCTEL logo are trademarks of PCTEL, Inc. InstallShield® is a registered trademark of InstallShield Software Corporation. Specifications are subject to change without notice.

Notices and Warranty Information

The information in this document is subject to change without notice and should not be construed as commitment by PCTEL. PCTEL assumes no responsibility or makes no warranties for any errors that may appear in this document and disclaims any implied warranty of merchantability or fitness for a particular purpose.

COPYRIGHT INFORMATION

No part of this document may be used or copied in any form or any means without prior written consent of PCTEL.

ALL RIGHTS RESERVED

Copyright 1997-2010 by
PCTEL, Inc.
RF Solutions
20410 Observation Drive, Suite 200
Germantown, MD 20876 USA
Phone: +1 (301) 515-0036
Fax: +1 (301) 515-0037



Table of Contents

1	PREFACE	1
1.1	PURPOSE	1
1.2	REFERENCES	1
1.3	LICENSE AGREEMENT.....	1
2	INSTALLATION	3
2.1	INSTALL PCTEL MX WINUSB DRIVER.....	3
2.2	UNINSTALL OF THE PCTEL MX WINUSB DRIVER.....	10



PCTEL SeeGull MX Driver Installation
Procedure
Release 0.1

[This Page Intentionally Left Blank]



1 Preface

1.1 Purpose

This document contains the installation procedure for the **PCTEL MX WinUSB Driver**.

1.2 References

The following documents complement the information contained within this document and should be consulted as required:

1. PCTEL, RF Solutions' Terms & Conditions of Sale

1.3 License Agreement

Please refer to **Software License Agreement** for the terms of the license agreement covering the use of the **PCTEL MX WinUSB Driver**.



[This Page Intentionally Left Blank]

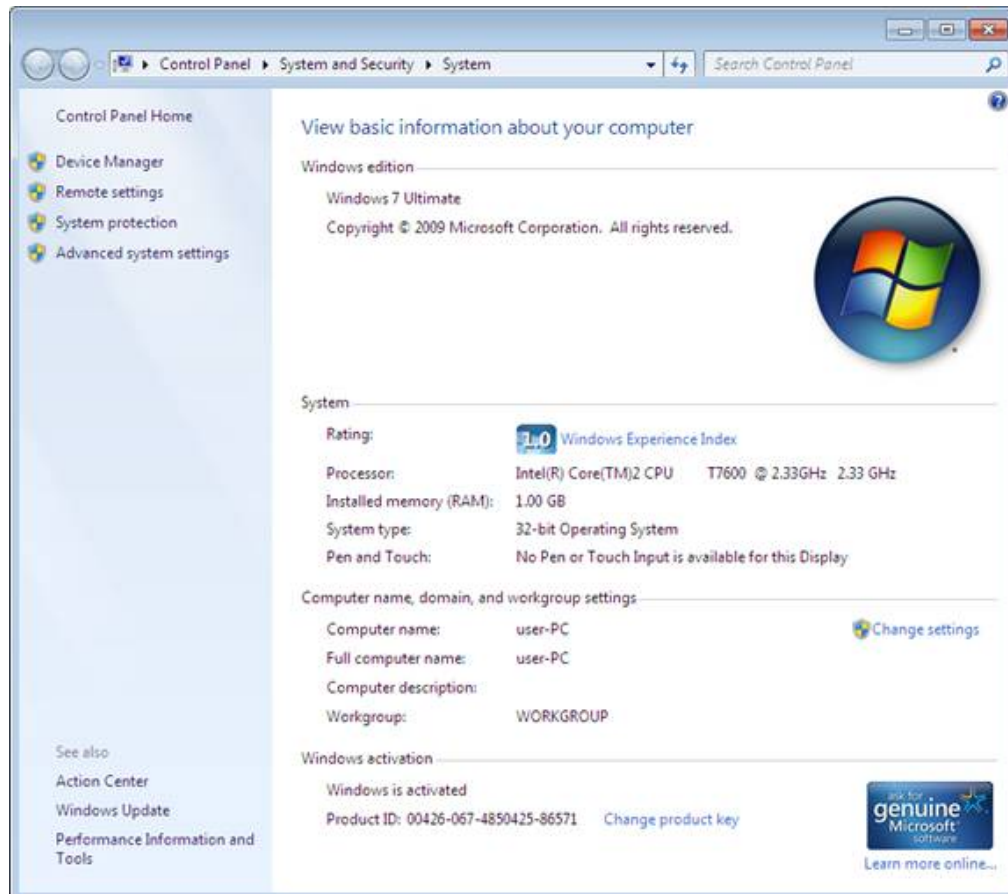
2 Installation

This section describes the required steps to install the **PCTEL MX WinUSB Driver** which is a generic USB driver developed and provided by Microsoft. For more information, please refer to the Microsoft website: [http://msdn.microsoft.com/en-us/library/ff540196\(VS.85\).aspx](http://msdn.microsoft.com/en-us/library/ff540196(VS.85).aspx)

2.1 Install PCTEL MX WinUSB Driver

The following steps describe how to install the **PCTEL MX WinUSB Driver**:

1. Log in as **Administrator**.
2. Insert the **PCTEL MX WinUSB driver CD** into the PC's CD ROM drive.
3. Find out the System type is 32 bit or 64 bit by right mouse clicking on the **My Computer**, and select **Properties** to bring up the **System** Panel. The System type shows the operating system is either 32 or 64 bit.



4. Run **DPIinst.exe** from the PCTEL MX WinUSB Driver folder.

Note: For 32 bit Operating System run DPIinst.exe from “**install x86**” folder and for 64 bit Operating System run DPIinst.exe from “**install x64**” folder.

5. The **PCTEL USB Device Installer** window should appear as shown below:



Figure 1 – PCTEL USB Device Installer Welcome window

6. Click on the **Next** button continue with the installation procedure.
7. For **Windows 7 & Vista** security window may appear as below:

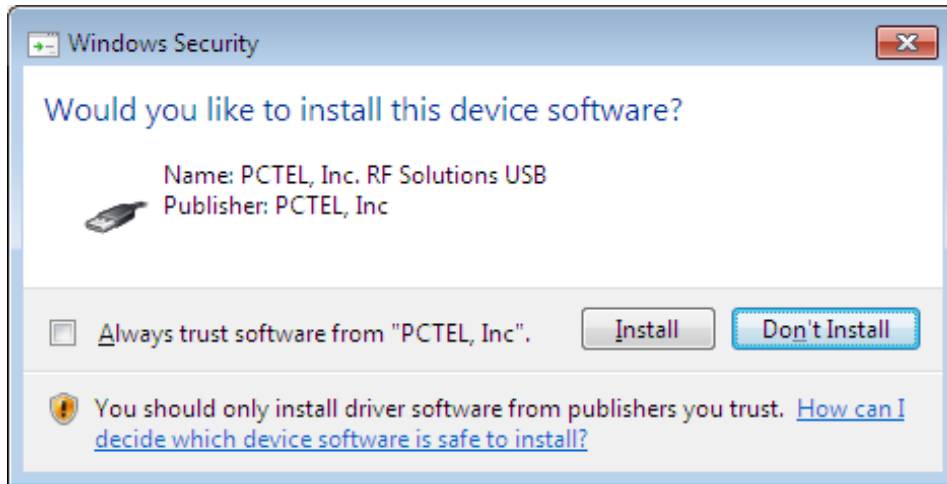


Figure 2 - Windows Security window (only for Windows 7 & Vista)

8. Click **Install** to continue installation. While installing you may observe the progress of the installation as below:

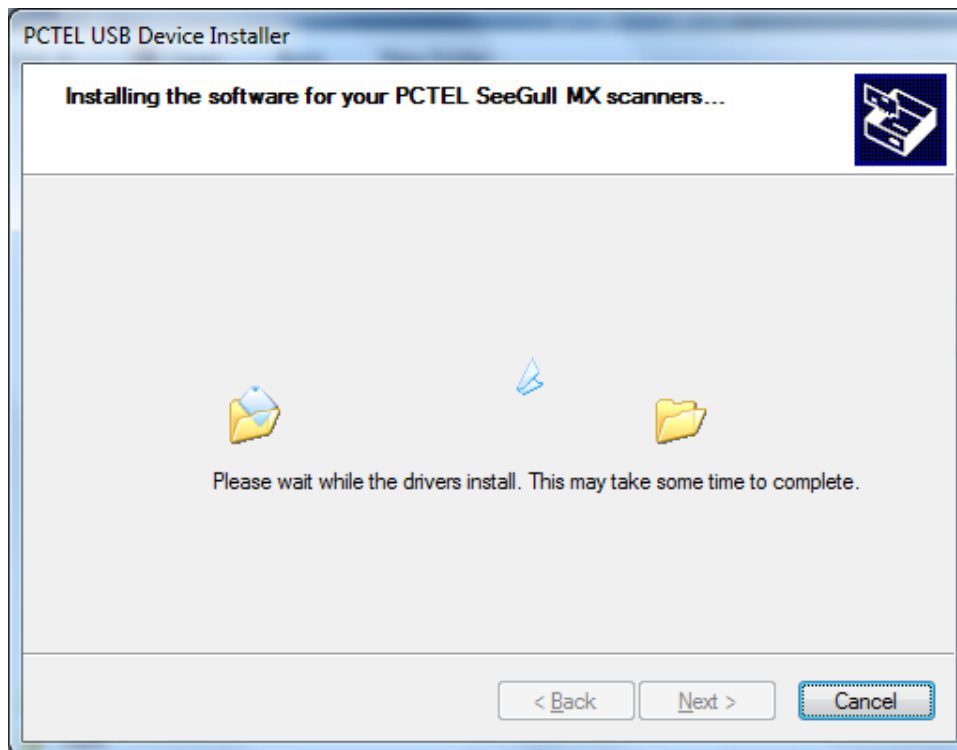


Figure 3 – Installation progress Window

9. Once the installation procedure has completed successfully the following window will display:

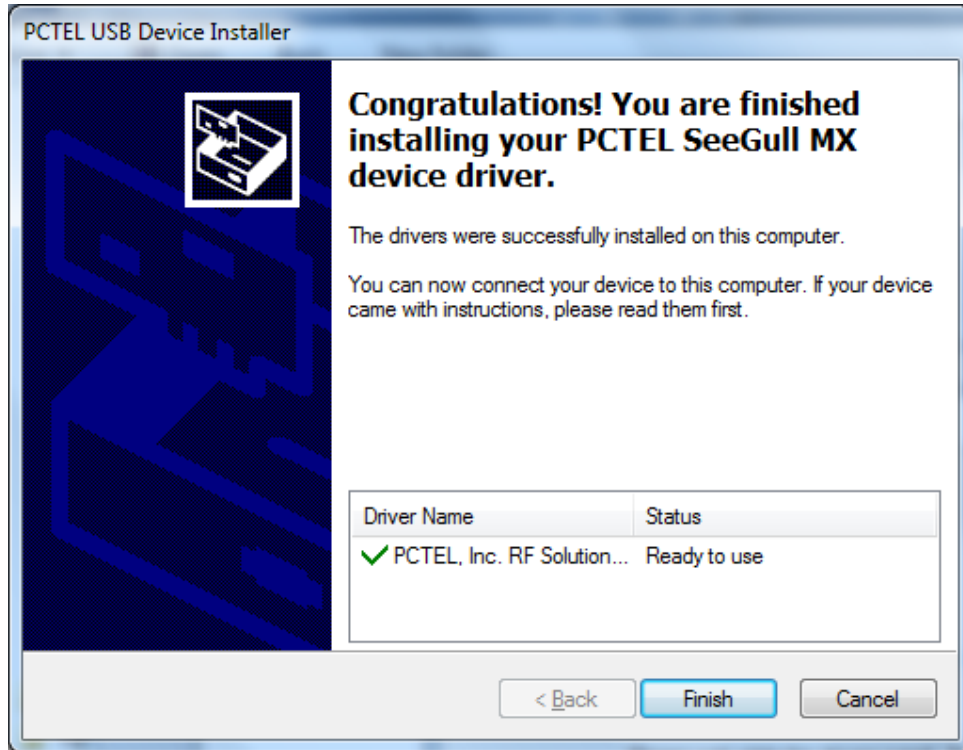


Figure 4 - Installation Completed Window

10. Click **Finish** will complete the Installation.
10. After installation of winusb driver software has completed, when first time **PCTEL MX Scanner** is connected the following steps need to perform.
11. **For Windows XP**, after connect the MX scanner for the first time it will display the following Found new Hardware window:



Figure 5 – Found New Hardware welcome window for XP

12. Select **No, not this time** and click **Next**. Following window will appear:

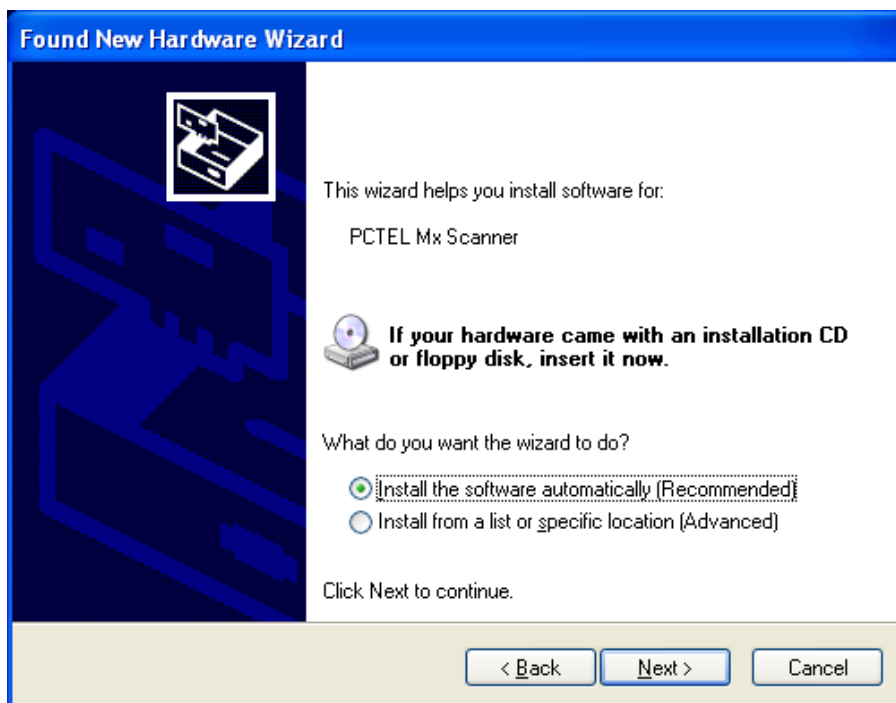


Figure 6 – Location for Driver software window

13. Select **Install the software automatically (Recommended)** and Click **Next**

14. WinUSB driver software will install automatically and after complete installation will display as below:

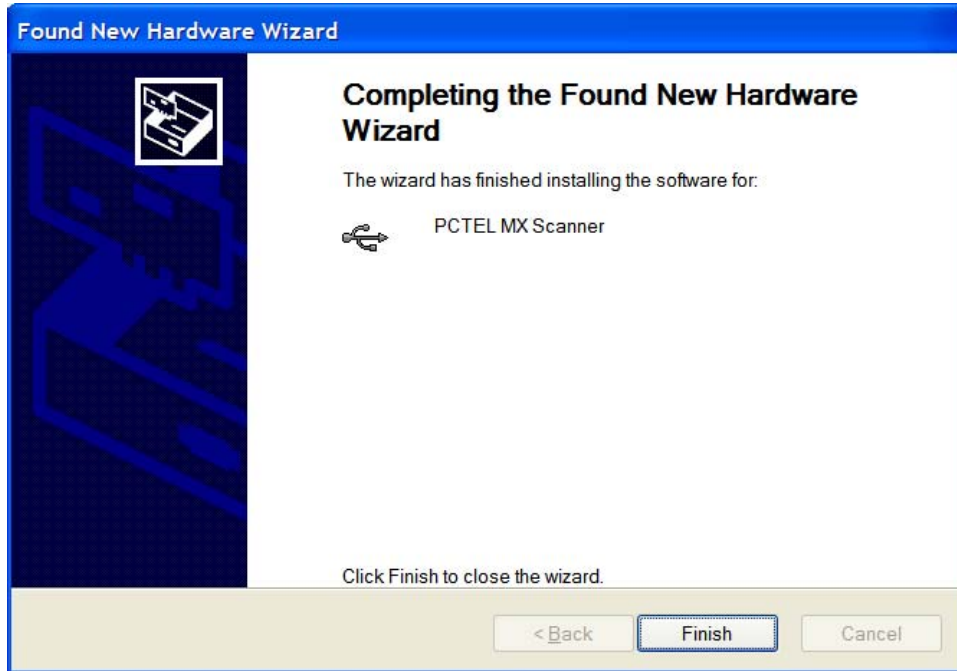


Figure 7 – Complete Found New Hardware wizard window

15. Click **Finish** to complete the installation
16. **For Windows 7 and Vista**, it will automatically detect and install driver software for the scanner. If you click on the device installation completed message at the right bottom corner of the screen it will show as below:

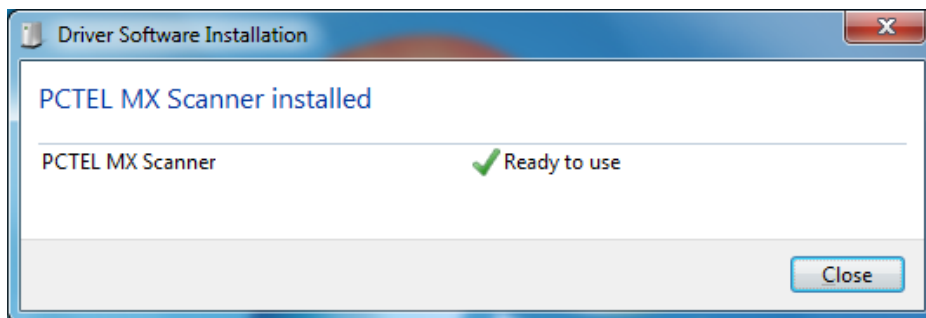


Figure 8 – PCTEL MX Scanner Ready to Use window.

Note: Need to restart the computer if it asks to restart the computer and displays as below:

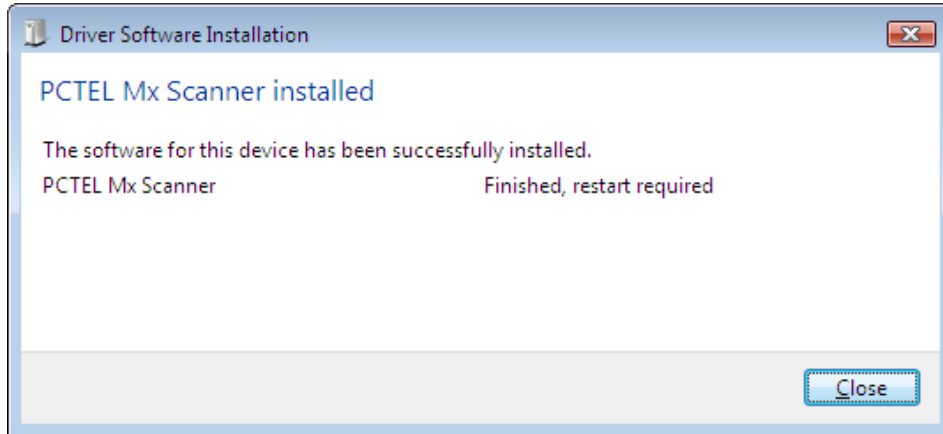


Figure 9 – Restart required window

17. **Device Manager** will show **PCTEL MX Scanner** under **PCTEL Devices** as below:

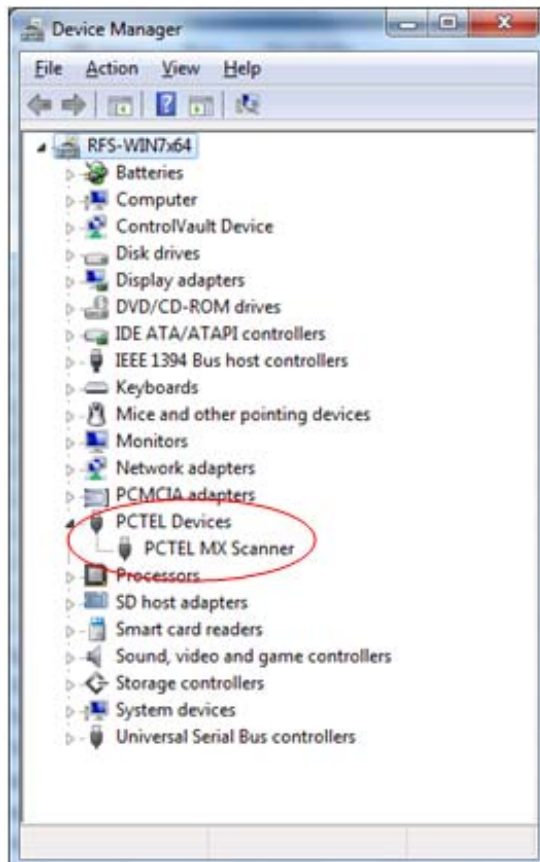


Figure 10 – Device Manager Window

This completes the **PCTEL MX WinUSB Device Driver Install Procedure**.

2.2 Uninstall of the PCTEL MX WinUSB Driver

This section describes the procedure to uninstall the PCTEL MX WinUSB Driver:

1. Open **Control Panel**.
2. **For XP** open **Add or Remove Programs** and **for Windows 7 or Vista** open **Uninstall a program** under **Programs**.
3. Select **Windows Driver Package – PCTEL, Inc. RF Solutions (WinUSB) PCTEL Devices (07/31/2009 01.00.00.00)** and select **Remove** or **Uninstall/Change**.

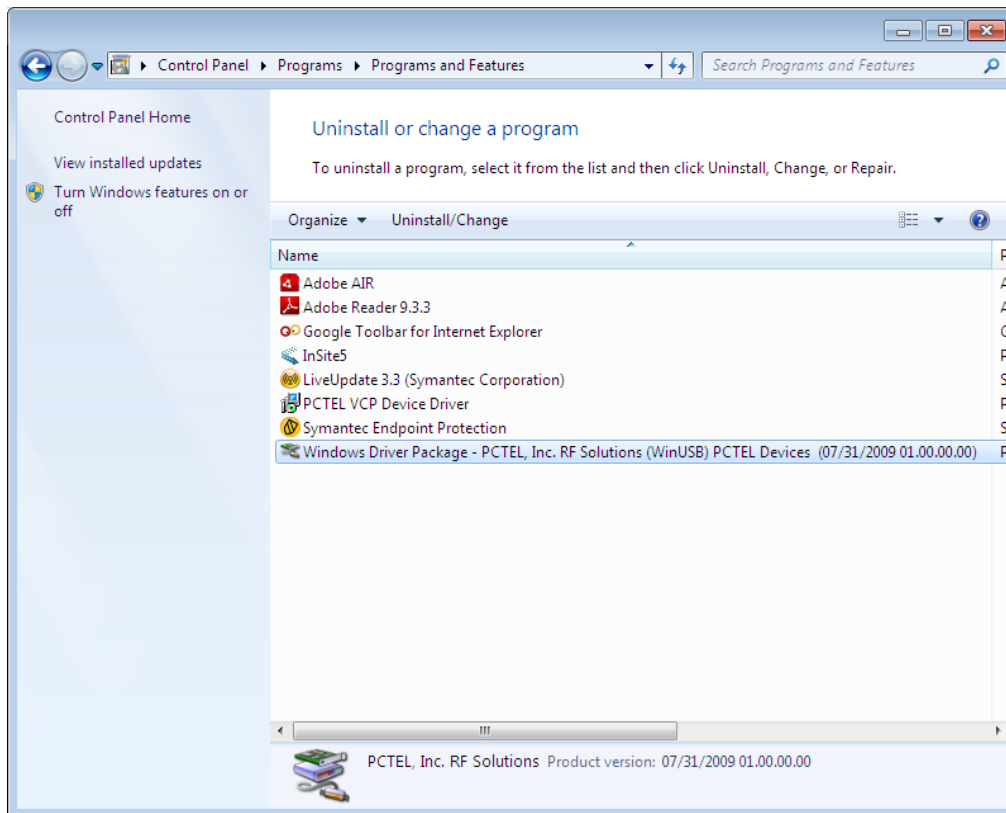


Figure 11 – Uninstall or Change a Program window

4. Click **Yes** to continue uninstall the driver.

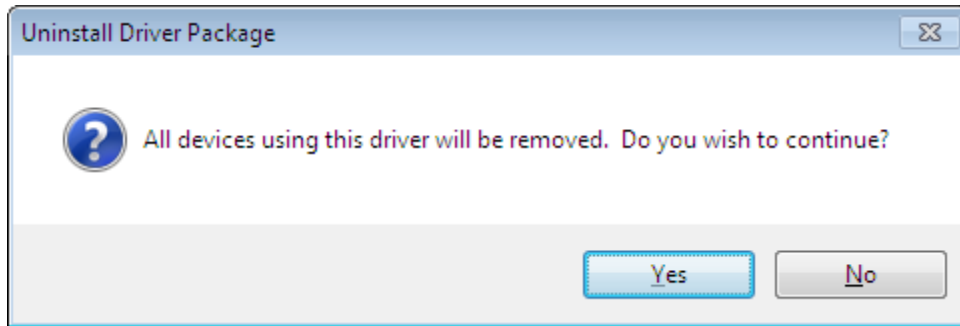


Figure 12 – Uninstall confirmation window

This completes the **PCTEL MX WinUSB Device Driver Uninstall** Procedure.

About RF Solutions Group

PCTEL RF Solutions Group is a recognized leader in high performance RF data collection components and systems used worldwide by leading drive test system OEMs, network operators, and engineering services companies to measure, monitor and optimize wireless networks. Its SeeGull[®] line of multi-standard demodulating Scanning Receivers, CLARIFY[®] Interference Management System, and InSite[®] Data Collection software provide a diverse set of tools that allow RF engineers to measure and optimize Radio Access Networks for all leading wireless technologies. PCTEL RF Solutions Group is certified ISO 9001:2000.

PCTEL RF Solutions Group, headquartered in Germantown, Maryland, offers its product through leading drive test tool vendors and directly through PCTEL.

For more information go to:
www.rfsolutions.pctel.com.

PCTEL RF Solutions Group products are protected under the following U.S. patents:
7,272,126; 7,236,746;
7,050,755; 7,013,113;
6,950,665; 6,931,235;
6,917,609; 6,816,709;

